

The Best Products, The Best Service...

# SERVICE METAL

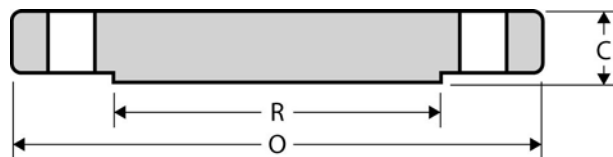
ONE CALL GETS IT ALL



## Blind Flange

### CLASS 300

Inches / Pounds



Nominal Pipe Size	Outside Diam. of Flange (O)	Thick. of Flange (C)	Diam. of Raised Face (R)	No. of Holes	Diam. of Holes	Diam. of Bolts	Diam. of Bolt Circle	Approx. Weight (in Pounds)
½	3.75	0.56	1.38	4	0.62	0.50	2.62	2
¾	4.62	0.62	1.69	4	0.75	0.62	3.25	3
1	4.88	0.69	2.00	4	0.75	0.62	3.50	3
1 ¼	5.25	0.75	2.50	4	0.75	0.62	3.88	4
1 ½	6.12	0.81	2.88	4	0.88	0.75	4.50	6
2	6.50	0.88	3.62	8	0.75	0.62	5.00	8
2 ½	7.50	1.00	4.12	8	0.88	0.75	5.88	12
3	8.25	1.12	5.00	8	0.88	0.75	6.62	16
3 ½	9.00	1.19	5.50	8	0.88	0.75	7.25	21
4	10.00	1.25	6.19	8	0.88	0.75	7.88	27
5	11.00	1.38	7.31	8	0.88	0.75	9.25	35
6	12.50	1.44	8.50	12	0.88	0.75	10.62	50
8	15.00	1.62	10.62	12	1.00	0.88	13.00	81
10	17.50	1.88	12.75	16	1.12	1.00	15.25	124
12	20.50	2.00	15.00	16	1.25	1.12	17.75	185
14	23.00	2.12	16.25	20	1.25	1.12	20.25	250
16	25.50	2.25	18.50	20	1.38	1.25	22.50	295
18	28.00	2.38	21.00	24	1.38	1.25	24.75	395
20	30.50	2.50	23.00	24	1.38	1.25	27.00	505
24	36.00	2.75	27.25	24	1.62	1.50	32.00	790

\* Dimensions conform to ASTM A/SA-105; ANSI B16.5